

SOMERBY  
EDGEWATER

Meaningful moments  
made here.



# The luxury you deserve. The level of care you want.

---

Life at Somerby Edgewater is designed to be everything you and your loved ones deserve. Beautifully crafted and thoughtfully appointed residences. A professional, compassionate team dedicated to your comfort and well-being. This is boutique Southern living at its finest — a warm, inviting atmosphere where neighbors become friends, and hospitality feels like home.

Here, you'll find the independence you want, with the support and services you need, all backed by the strength and reputation of Bridge Senior Living. At Somerby Edgewater, we go beyond the expected. We care more. We innovate more. We inspire more. All so you can enjoy an abundant, fulfilling life in every season.

SOMERBY  
EDGEWATER









# Southern living close to everything.

---



Somerby Edgewater offers the perfect combination of serene surroundings and everyday convenience. Nestled in Indian Land, South Carolina, our community places you just minutes from Ballantyne, Fort Mill, and Charlotte, NC. Shopping, dining, healthcare, and cultural activities are all close at hand, yet you'll return home to a peaceful retreat designed for relaxation. Whether you prefer a quiet evening on our grounds, an afternoon exploring Indian Land's growing community, or a day trip into the vibrant Charlotte area, everything you need and want is always nearby.



## Where are we?

Somerby Edgewater  
1099 Edgewater Corporate Pkwy  
Indian Land, SC 29707



# A sanctuary for every season.

---

Life's journey may take unexpected turns,  
but every new chapter holds promise.  
At Somerby Edgewater, we strive to create  
a lifestyle rich with comfort, opportunity,  
and connection.

With thoughtfully designed residences, expert  
health services, and a wide variety of amenities,  
our community ensures every resident experiences  
peace of mind, fulfillment, and joy. Here, your desire  
to stay active and engaged is supported daily  
by our caring associates, who are committed to  
making every moment meaningful.



Your desire to stay active can still be fulfilled, thanks to the expert care of Somerby Edgewater's friendly professionals.

## Assisted Living

---

**Sometimes, a little extra support makes all the difference.**

Assisted Living at Somerby Edgewater provides personalized care in a warm, welcoming environment that encourages independence. Our associates assist with daily activities such as bathing, dressing, medication management, and mobility — always delivered with dignity and respect. Safety and comfort are enhanced by daily check-ins, emergency response systems, and staff available around the clock. Your loved one will not only feel secure, but also valued, active, and connected.

***A few other common ways our associates assist with daily activities include:***

- ***Assistance with bathing and dressing as needed***
- ***Medication Management***
- ***Help getting in and out of bed***
- ***Help getting to meals and other activities***
- ***Additional assistance at mealtime if needed***
- ***Discreet personal care whenever needed***

For Assisted Living residents, we offer 1 bedroom suite, 1-bedroom/1-bath and two bedroom/2-bath floor plans.

Like all of our apartments, they feature an open, contemporary design along with modern appliances.

*Residence features may include:*

- *Individual thermostat controls*
- *Modern kitchens and kitchenettes*
- *Laundry and housekeeping service*
- *Utilities (electricity, water, cable, and wifi)*
- *Community activities, events, and programs*
- *Trash service*
- *Pest control*
- *No property taxes*

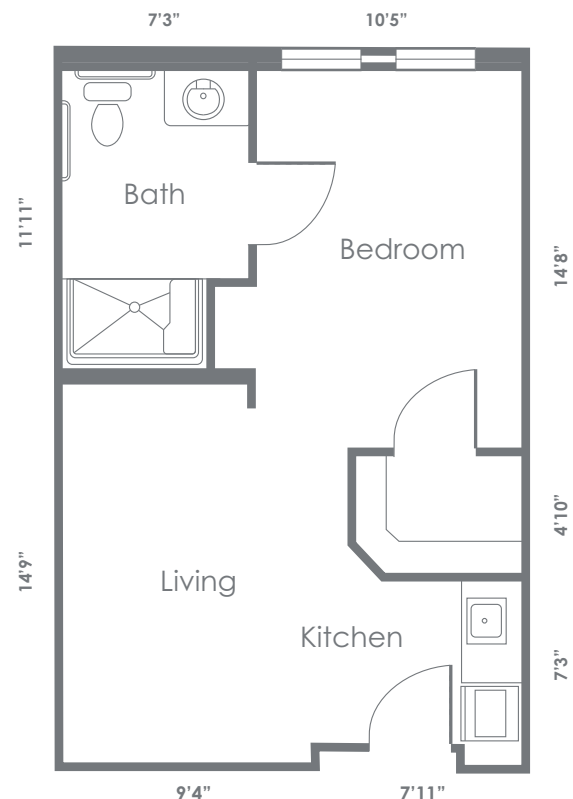
Of course, they're pet-friendly too.

\*Additional costs may apply.



**Palm One-Bedroom**

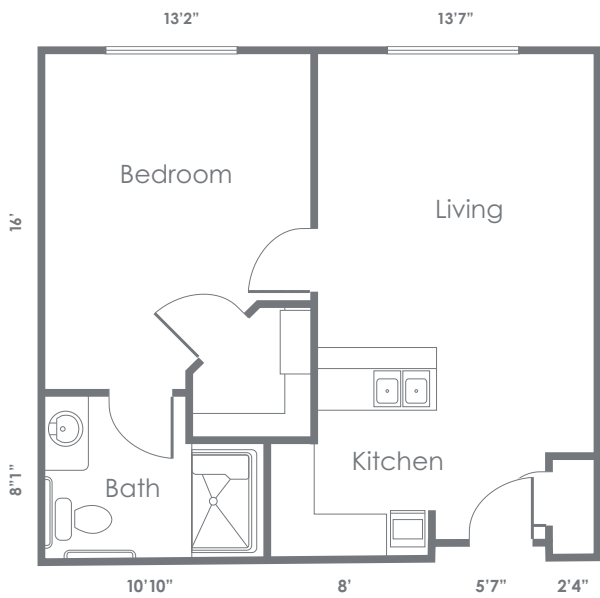
500 sq. ft. — 1 Bedroom/1 Bath





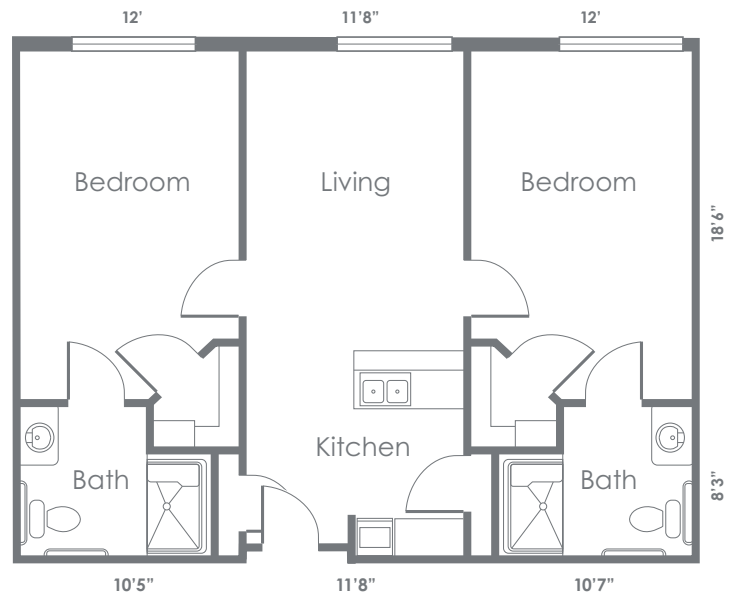
### Clayton One-Bedroom

675 sq. ft. — 1 Bedroom/1 Bath



### Grande Two-Bedroom

1,000 sq. ft. — 2 Bedroom/2 Bath





# Lilac Trace Memory Care

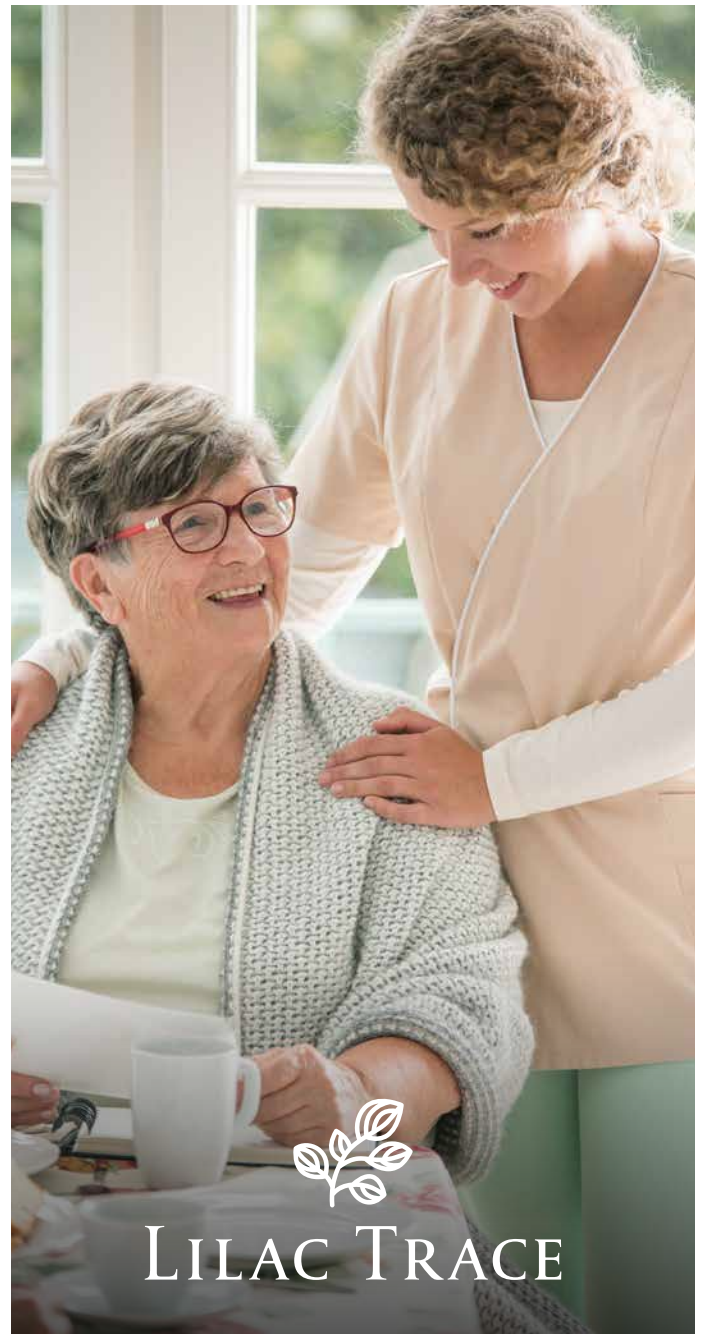
---

## Making the most of every day.

Our Lilac Trace Memory Care is our research-backed approach to care and support for those living with Alzheimer's and other forms of dementia. Guided by the philosophy from the best-selling book, *Meet Me Where I Am*, we believe every resident's story deserves to be honored and celebrated. Through individualized care plans, our REACH for Life daily sequential programming, and dementia trained team, we create an environment where residents can thrive and each day is filled with purpose, dignity, and moments of joy.

### *Some features of our Lilac Trace Memory Care include:*

- *REACH for Life Daily Sequential Programming*
- *Daily on-site support of trained staff*
- *Nutrition management*
- *Assistance, including extra social and one-and-one time, to help each resident experience as much joy as possible every single day*
- *Emotional support using proven techniques individualized for each resident*
- *Family-centered consultation and involvement to help achieve consistently better outcomes*



LILAC TRACE

Memory Care apartments are available in studio and 1-bedroom/1-bath floor plans.

They are designed to facilitate the highest levels of safety and care.

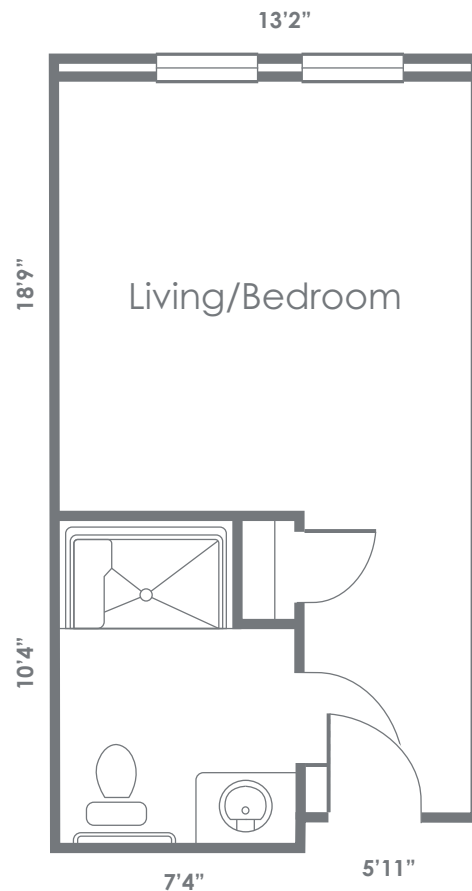
*All residences include:*

- *Individual thermostat controls*
- *Utilities (electricity, water, telephone)*
- *Housekeeping*
- *Trash service*
- *Pest control*
- *No property taxes*



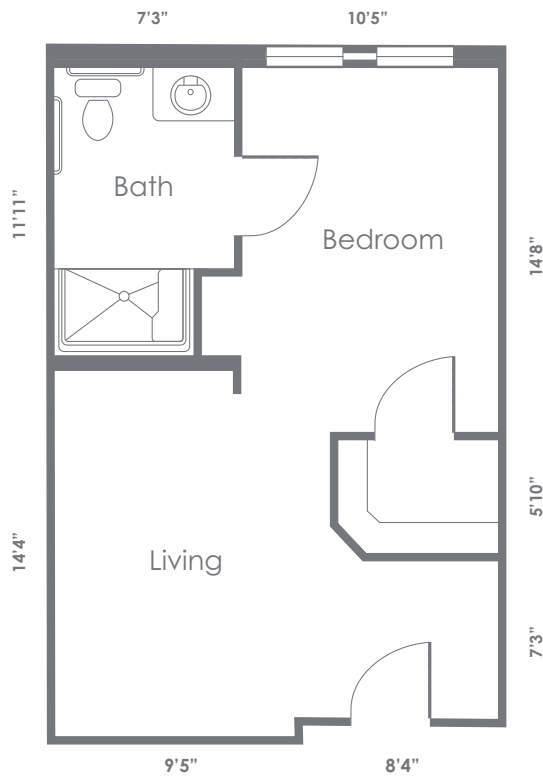
**Ashley Studio**

350 sq. ft. — 1 Bedroom/1 Bath



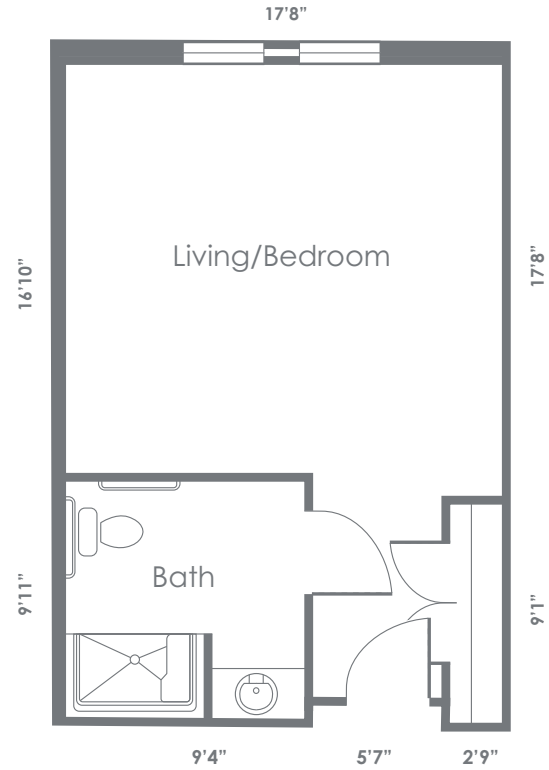
**Belle Studio**

500 sq. ft. — 1 Bedroom/1 Bath



**Willow Studio Deluxe**

500 sq. ft. — 1 Bedroom/1 Bath







# It's what's on the inside that counts.

---

When you're considering a senior living community, there are certain "must haves." A choice of spacious apartments. A compassionate staff. Inviting meals you can look forward to. Professional, expert care whenever you need it.

At Somerby Edgewater, we tick all the boxes when it comes to the must-haves. But as a Bridge Senior Living community, it's the way in which we deliver all the other pieces that help our residents live a more fulfilling lifestyle. Our emphasis on hospitality opens the door to a world of luxury services and amenities that simply cannot be found elsewhere. We call it "Lifestyle Plus."

# A feast for the body and the soul.

---



If food is the foundation of healthy living, mealtime may just be the foundation of a healthy community. After all, breaking bread with friends and family has been a principal way of building relationships, stirring the heart, and sharpening the mind throughout history.

**At Somerby Edgewater, we take the joy of mealtime seriously, providing both outstanding menu options and memorable moments with friends.**

Professional chefs prepare the meals while linens, seasonal delights, and daily menu accentuate the dining experience. A perfect place to enjoy fresh flavors with a healthy side of lively conversation.



# Every detail designed for your lifestyle.

---

New copy for this section Will you find exceptional amenities at Somerby Edgewater? Certainly. And as for activities? Far too many to capture in these few lines. Yet before we share those, let us first speak to something even more meaningful: living a life enriched with connection and growth.

At Somerby Edgewater, each day brings opportunities to nurture long-cherished interests, awaken new passions, and engage in experiences that inspire. Here, you can cultivate deeper relationships, embrace personal growth, explore knowledge, and find renewed purpose in every season of life.

Our residents treasure the fulfillment they discover here, and we believe you will as well. Along with this, we know you'll delight in the many thoughtful amenities and engaging activities that await you at Somerby Edgewater.

## *Life at Somerby:*

- *Life enrichment programming tailored to resident interests*
- *Pet-friendly environment*
- *Restaurant-style dining*
- *Full-service bar and executive chef*
- *Game rooms, salon, spa, and fitness center*
- *PT, OT, and speech therapy services*
- *Licensed care staff available 24/7*
- *Private courtyards, outdoor dining, and gardens*
- *Housekeeping, laundry, and transportation services*
- *Emergency call systems throughout the community*



# More than a touch of useful technology.

---

While it may be great fun to reminisce about days gone by, few of us would care to return to using party-line telephones or adjusting rabbit ears on the television.

**At Somerby Edgewater, we don't just welcome the march of technological progress — we join in the innovation parade..**



## **Bridge Senior Living App**

Somerby Edgewater is operated by Bridge Senior Living. So, naturally, we use the Bridge Senior Living App. Powered by LifeLoop, this app offers a central hub for residents, their families, friends and staff to stay connected by sharing personalized activity schedules, photos, messages and more.

## **Telehealth**

The era of doctors making house calls is back — at least virtually. Not only do we offer technical support for your telehealth appointments, but we also even conduct appointments in the privacy of your room or apartment. It's convenient, safe and thorough. Just what the doctor ordered.

# Bridge Senior Living makes all the difference.

## **BRIDGE SENIOR LIVING**

As a trusted name in the Southeast, Bridge Senior Living has been proudly serving older adults around the country. Somerby

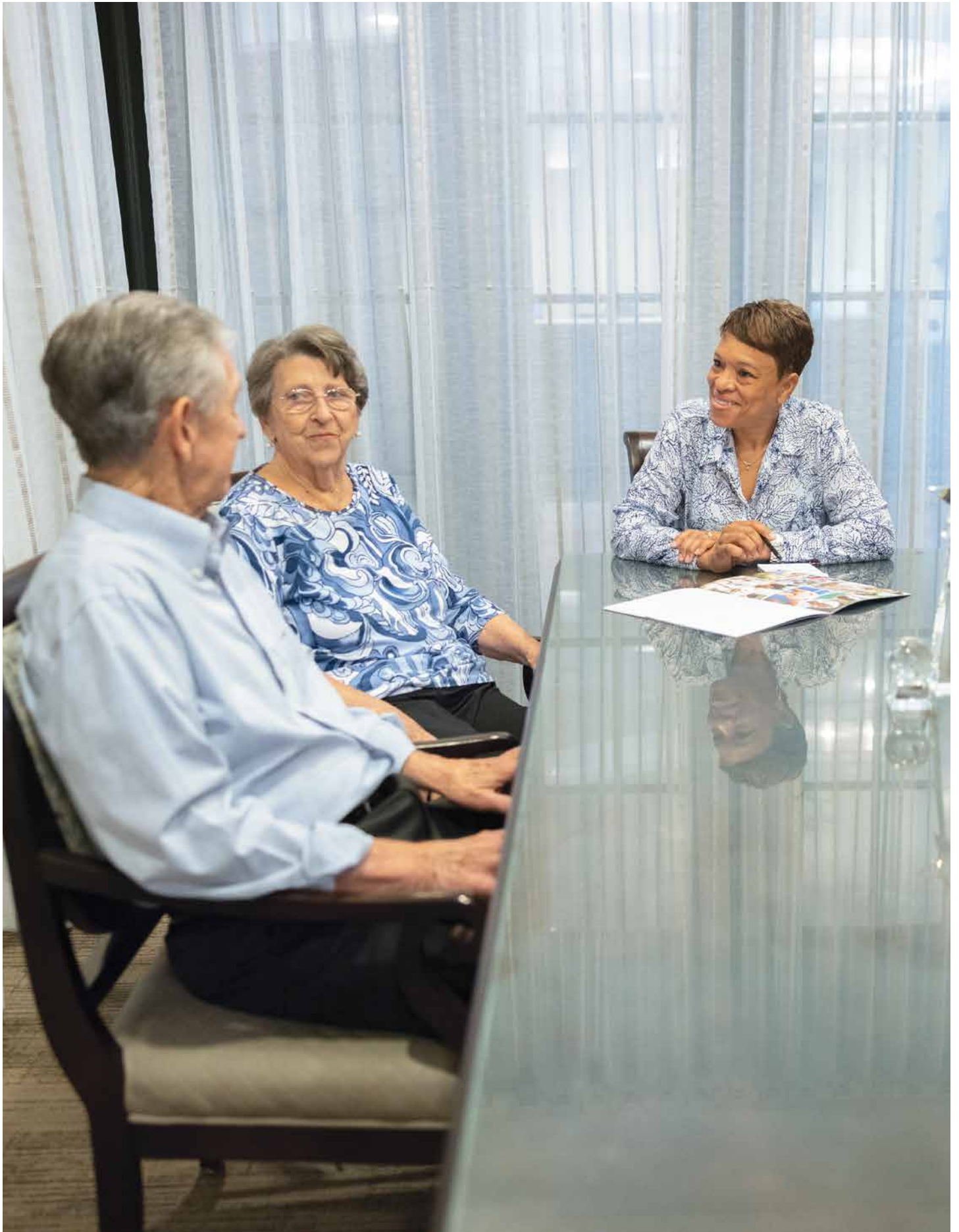
Edgewater combines the professional care and superior hospitality we're known for with the luxury services and amenities older adults desire.

Beyond developing forward-thinking initiatives, such as the Bridge Senior Living App and other technologies, Bridge Senior Living stands apart for its commitment to resident safety with the Bridge Safe program. Bridge Safe ensures that we have enhanced safety protocols in place to protect our residents and the resources to put those protocols into practice.

Bridge Senior Living emphasizes innovation and hospitality across all aspects of community life to make retirement living at Somerby Edgewater a richer and more fulfilling experience for our residents.



Grow as a person, build stronger relationships, deepen your spirituality, expand your knowledge, and live with purpose.





# The Somerby Lifestyle

The Somerby lifestyle is more than just where you live — it's how you live. Here, hospitality meets sophistication, and every detail reflects an elevated boutique approach to senior living. From curated programming and personalized care to elegant spaces and gracious service, Somerby Edgewater is designed for seniors who want more out of life. We call it upscale Southern living, reimagined.

Take a tour, meet some residents,  
meet the staff, ask all the questions  
you like — even stay for lunch if you  
have the time! Just give us a call  
and we'll make it happen.

**To schedule a visit  
or for more information about  
Somerby Edgewater, email  
[EdgewaterMarketing@SomerbyLiving.com](mailto:EdgewaterMarketing@SomerbyLiving.com)  
or call (803) 310-3731.**

S O M E R B Y  
EDGEWATER

1099 Edgewater Corporate Pkwy | Indian Land, SC 29707  
[SomerbyEdgewater.com](http://SomerbyEdgewater.com)